



Rocky Mountain National Park Atlas

About the Park

Rocky Mountain National Park is located about 55 miles (89 km) northwest of Denver between the towns of Estes Park to the east and Grand Lake to the west. Known for its mountains, alpine lakes, wildlife, and over 300 miles of hiking trails, the park welcomes approximately 4 million visitors annually. It is the highest national park in America with elevations ranging from 7,860 to 14,259 feet and 60 mountain peaks over 12,000 feet, the tallest one being Longs Peak. The park is 265,461 acres in size with another 253,059 adjoining acres of U.S. Forest Service wilderness. (Wikipedia, 2019)

There is evidence that nomadic Paleo-Indians traveled along what's now called the Trail Ridge Road as long as 10,000 years ago to hunt and forage until the gold rush of the mid-1800s when they were displaced by white settlers. The first explorer to arrive was Stephen Long in 1820, for whom Longs Peak is named. In the early 1900s, many lodges were built, as well as some of the main transportation infrastructure. Despite opposition from mining, logging, and agricultural interests, the national park was established on January 26, 1915. (National Park Service, 2017)

Due to dramatic differences in temperature, elevation, and topography, Colorado has one of the most diverse plant and animal environments in the United States. There are four ecosystems or zones with the park: montane, subalpine, alpine tundra, and riparian, with the riparian zone occurring within all the other zones. There are nearly 300 species of birds and 70 mammals including elk, bighorn sheep, moose, deer, foxes, coyotes, bobcats, and cougars. The Continental Divide that runs through the center of the park from the northwest to the southeast creates two distinct climates with the east side being drier with heavily glaciated peaks, and the lush forests to the west experiencing less wind and more snow. (Wikipedia, 2019)

If you're planning to visit the park, there is plenty to see and do for everyone. We've already mentioned the hiking trails, but there's also horseback riding, rock climbing, camping, fishing, and snowshoeing, to name a few. There's also no lack of scenic drives if you want to do some sight-seeing and/or wildlife viewing. Before engaging in any activities, be sure to consult the park website below for safety and preservation guidelines. (National Park Service, 2017)

<https://www.nps.gov/romo/index.htm>



Mountain stream along the Fall River Road in Rocky Mountain National Park.

Table of Contents

About the Park ----- i

Legend and Key Map ----- ii

Atlas Plates:

A1 ----- 1

A2 ----- 2

A3 ----- 3

B1 ----- 4

B2 ----- 5

B3 ----- 6

C1 ----- 7

C2 ----- 8

C3 ----- 9

D1 ----- 10

D2 ----- 11

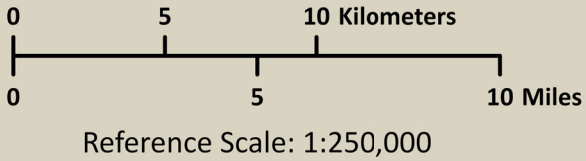
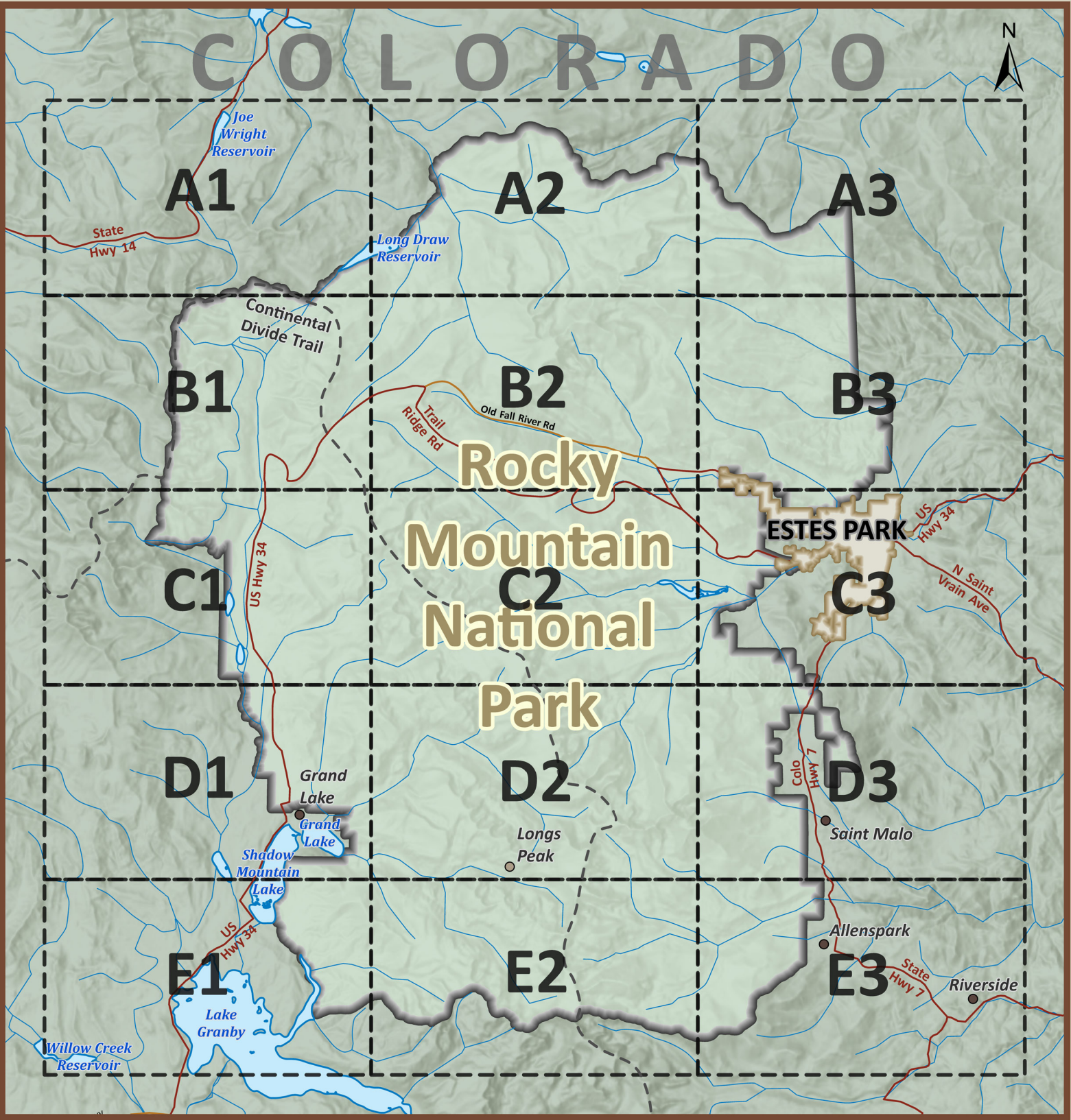
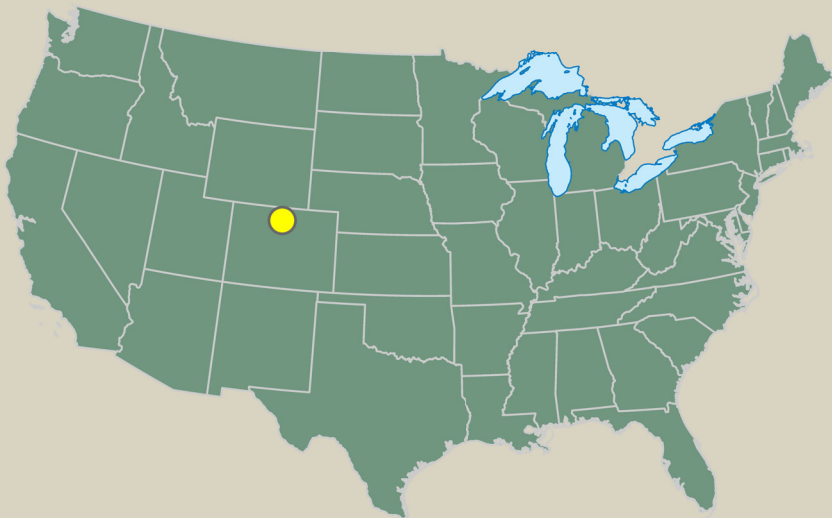
D3 ----- 12

E1 ----- 13

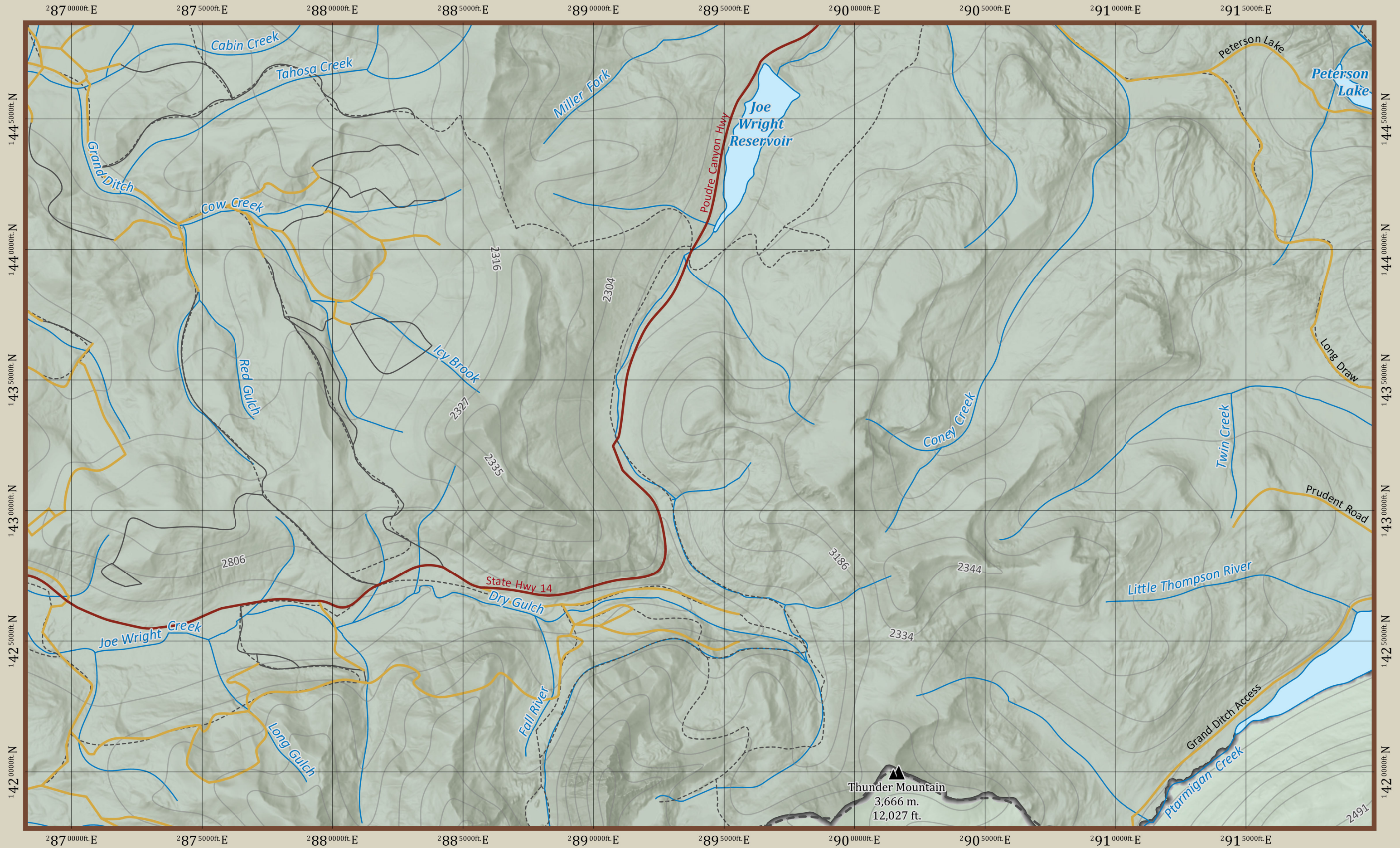
E2 ----- 14

E3 ----- 15

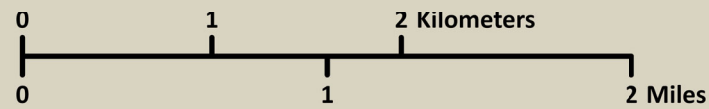
Credits and Citations ----- iii



- Airport
- Cliff
- Dam
- Picnic Area
- Ranger Station
- Restroom
- Shuttle Stop
- Summit
- Visitor Center
- Drainage Feature
- Land Feature
- Populated Place
- Hiking Trail
- Continental Divide Trail
- Vehicular Trail (4WD)
- Local Road
- Local Connecting Road
- Major Connecting Road
- Contour (100 m)
- Watercourse
- Waterbody
- Colorado
- Park Boundary
- Estes Park Boundary
- Camping Zone



Rocky Mountain National Park

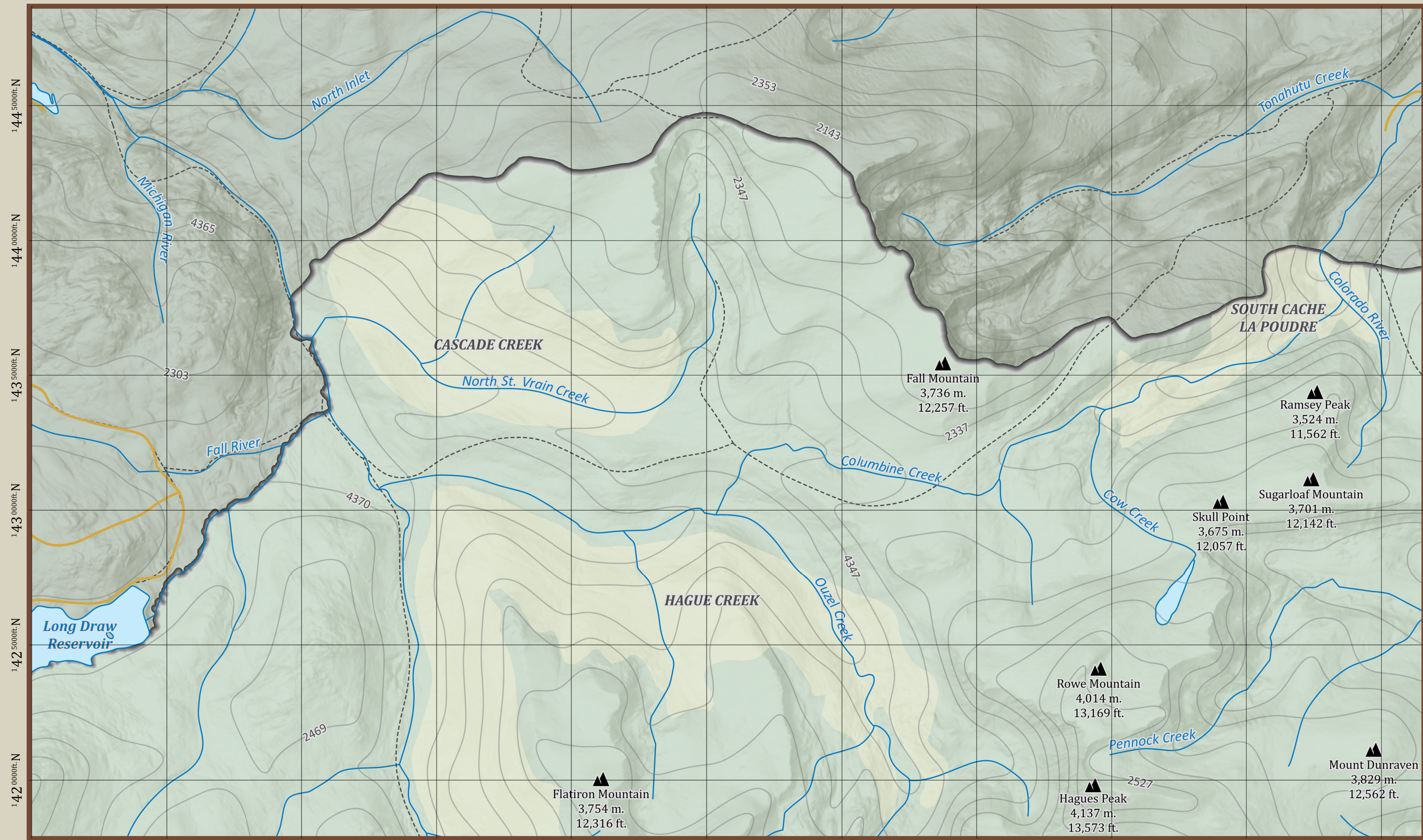


Reference Scale: 1:40,000
NAD 1983 (2011) StatePlane Colorado North FIPS 0501 (US Feet)

292 0000ft.E 292 5000ft.E 293 0000ft.E 293 5000ft.E 294 0000ft.E 294 5000ft.E 295 0000ft.E 295 5000ft.E 296 0000ft.E 296 5000ft.E 297 0000ft.E

144 5000ft.N
144 0000ft.N
143 5000ft.N
143 0000ft.N
142 5000ft.N
142 0000ft.N

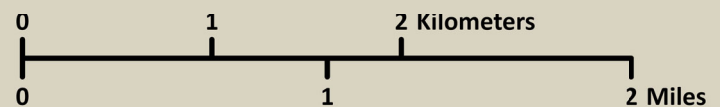
144 5000ft.N
144 0000ft.N
143 5000ft.N
143 0000ft.N
142 5000ft.N
142 0000ft.N



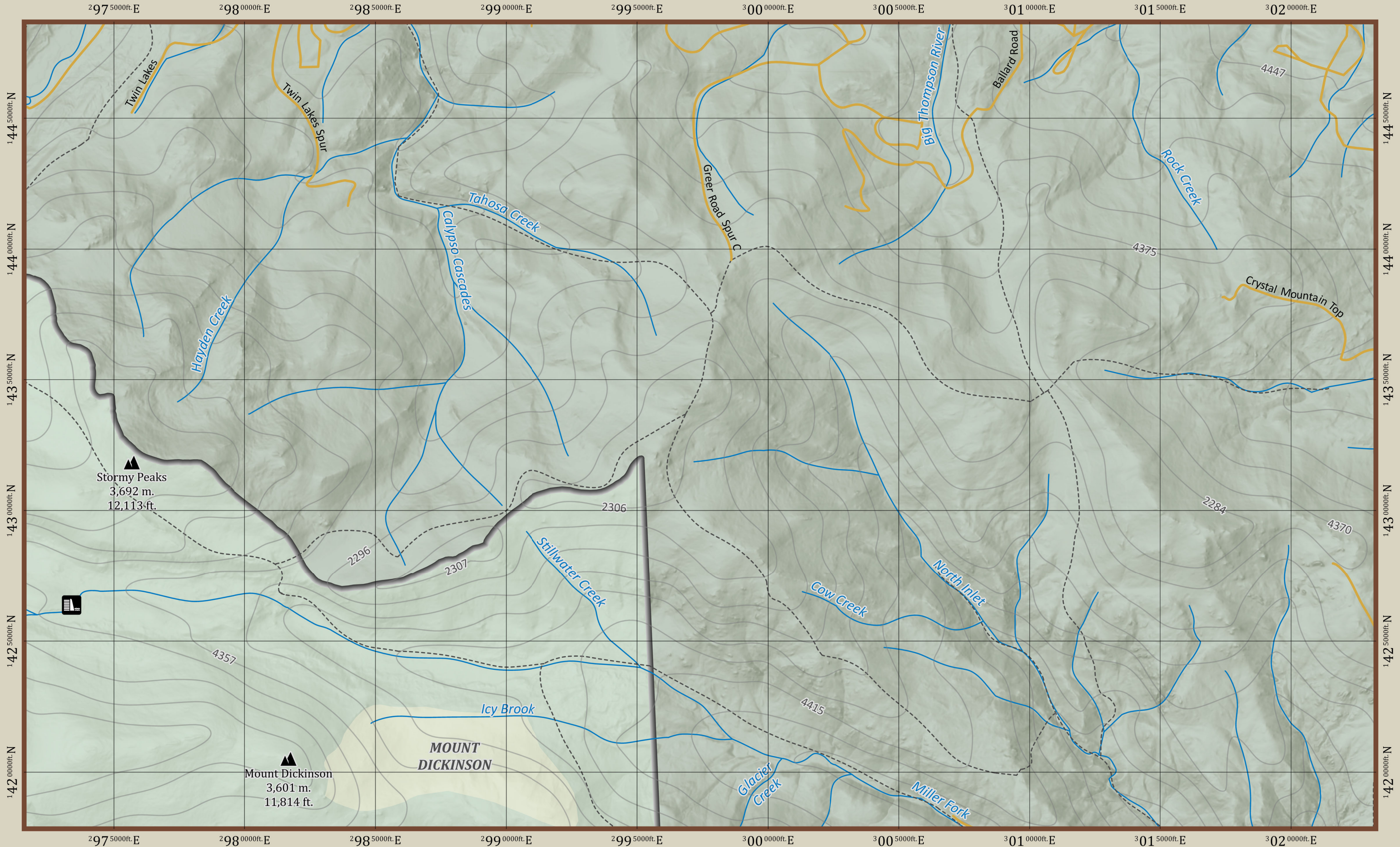
292 0000ft.E 292 5000ft.E 293 0000ft.E 293 5000ft.E 294 0000ft.E 294 5000ft.E 295 0000ft.E 295 5000ft.E 296 0000ft.E 296 5000ft.E 297 0000ft.E



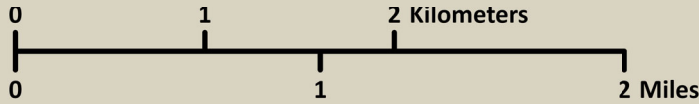
Rocky Mountain National Park



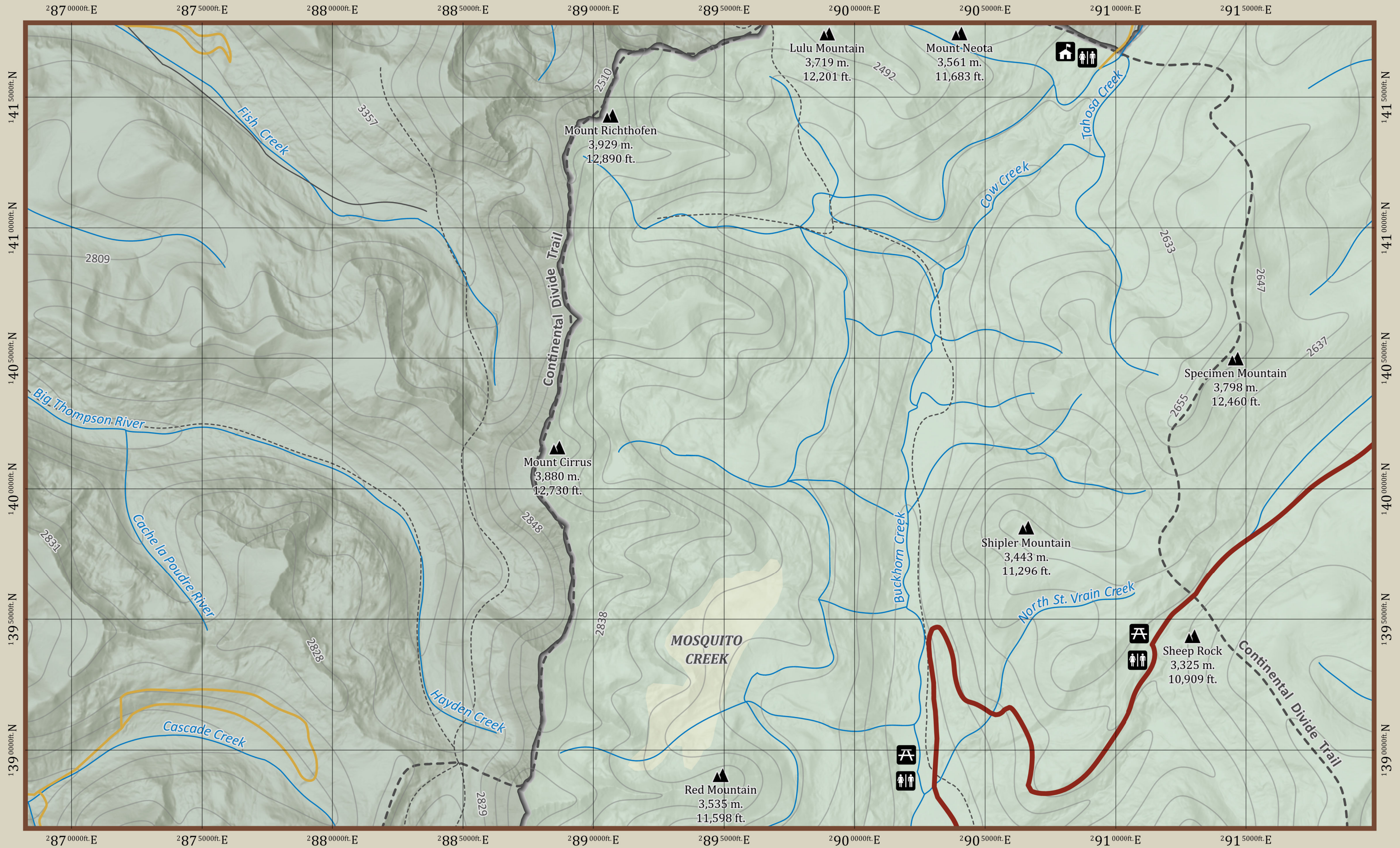
Reference Scale: 1:40,000
NAD 1983 (2011) StatePlane Colorado North FIPS 0501 (US Feet)



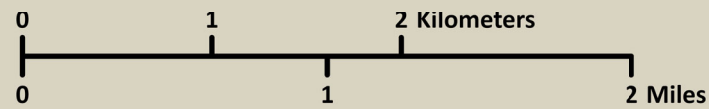
Rocky Mountain National Park



Reference Scale: 1:40,000
NAD 1983 (2011) StatePlane Colorado North FIPS 0501 (US Feet)

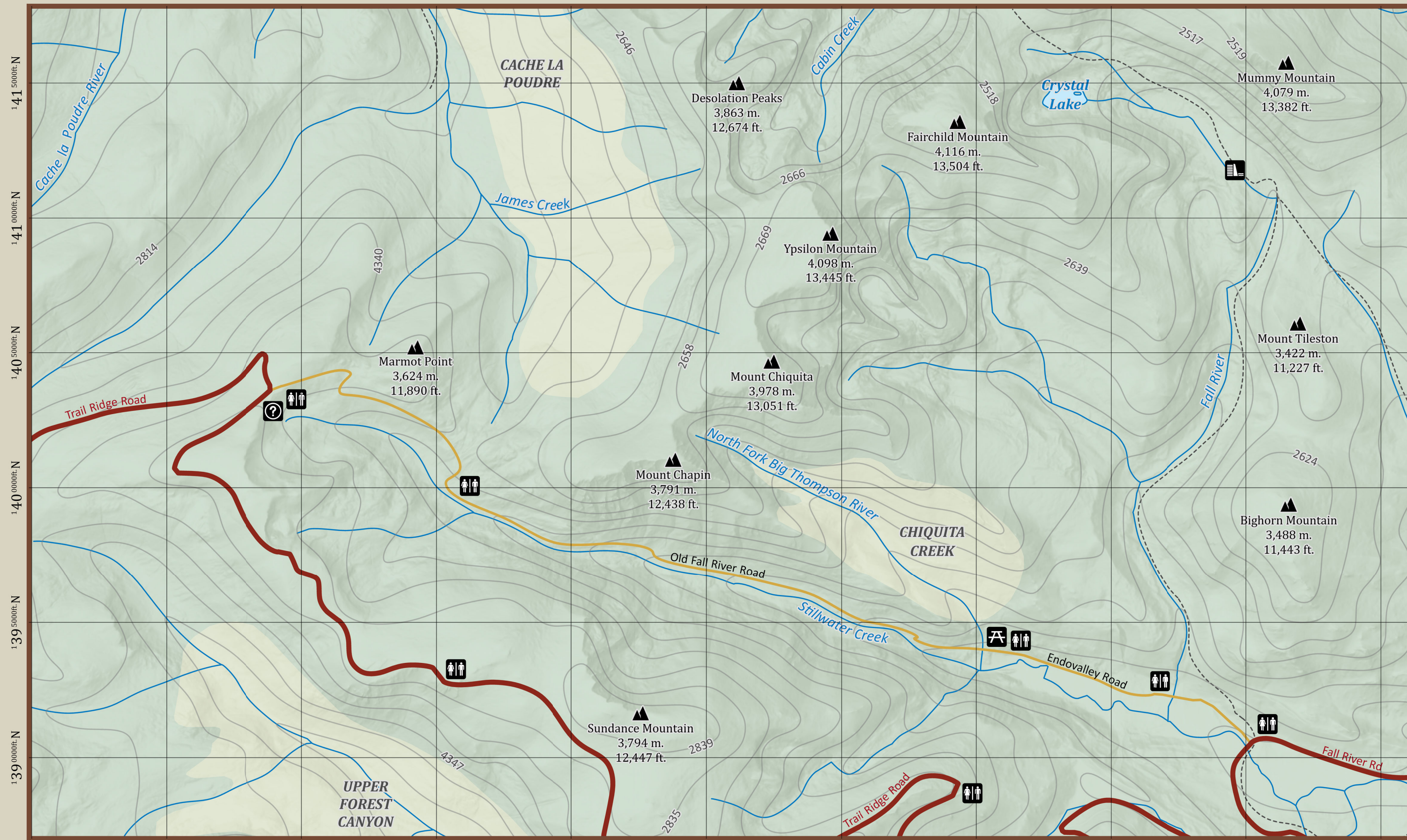


Rocky Mountain National Park



Reference Scale: 1:40,000
NAD 1983 (2011) StatePlane Colorado North FIPS 0501 (US Feet)

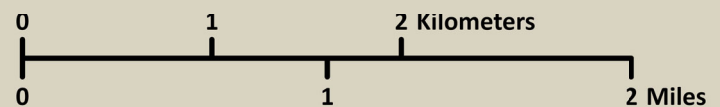
292 0000ft.E 292 5000ft.E 293 0000ft.E 293 5000ft.E 294 0000ft.E 294 5000ft.E 295 0000ft.E 295 5000ft.E 296 0000ft.E 296 5000ft.E 297 0000ft.E



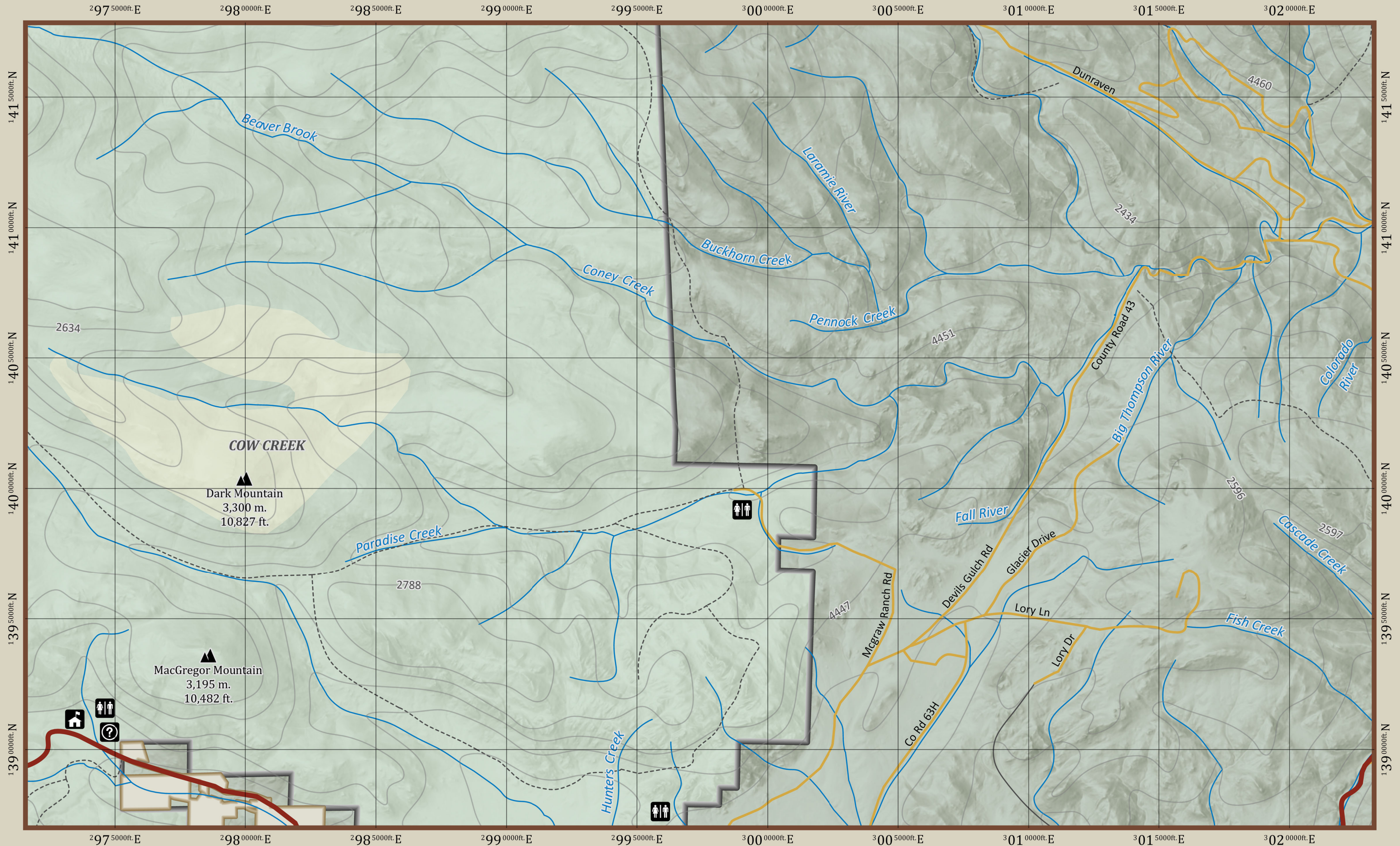
292 0000ft.E 292 5000ft.E 293 0000ft.E 293 5000ft.E 294 0000ft.E 294 5000ft.E 295 0000ft.E 295 5000ft.E 296 0000ft.E 296 5000ft.E 297 0000ft.E



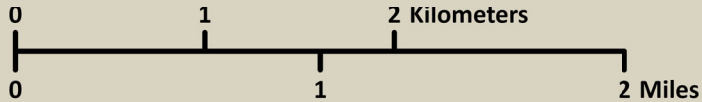
Rocky Mountain National Park



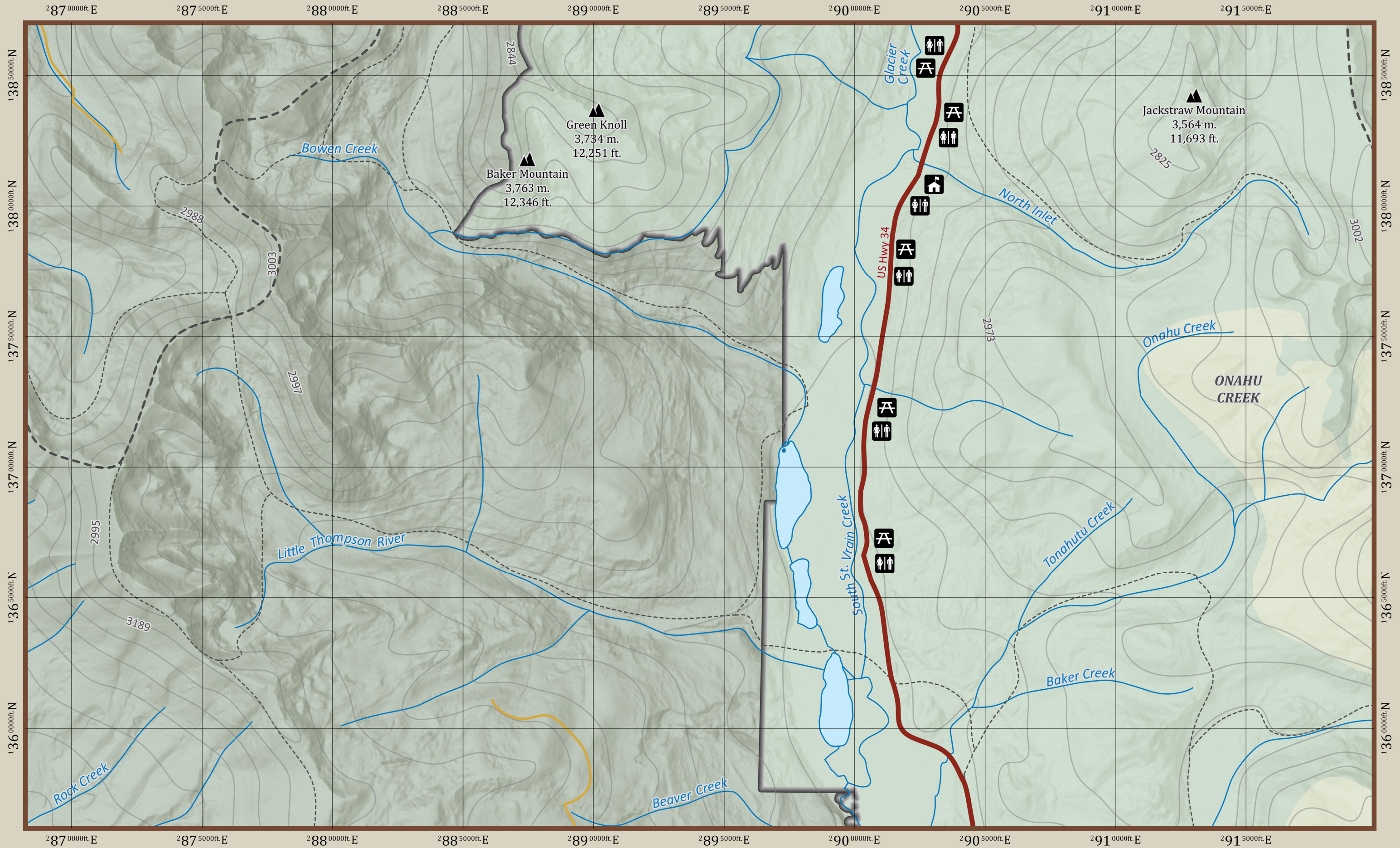
Reference Scale: 1:40,000
NAD 1983 (2011) StatePlane Colorado North FIPS 0501 (US Feet)



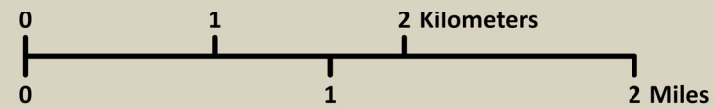
Rocky Mountain National Park



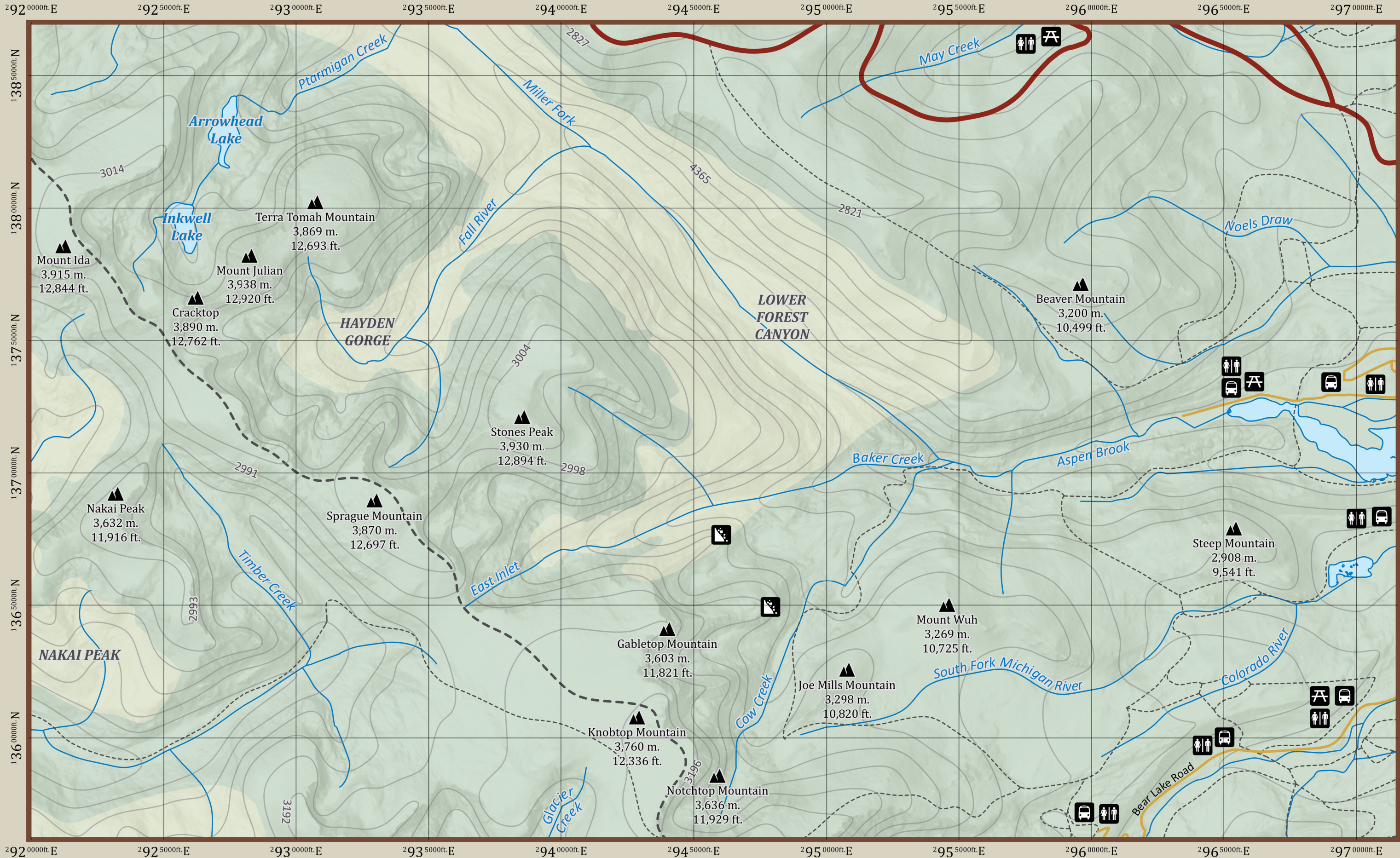
Reference Scale: 1:40,000
NAD 1983 (2011) StatePlane Colorado North FIPS 0501 (US Feet)



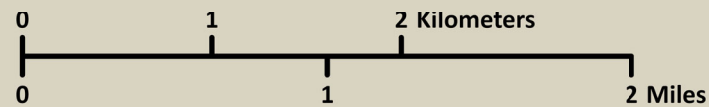
Rocky Mountain National Park



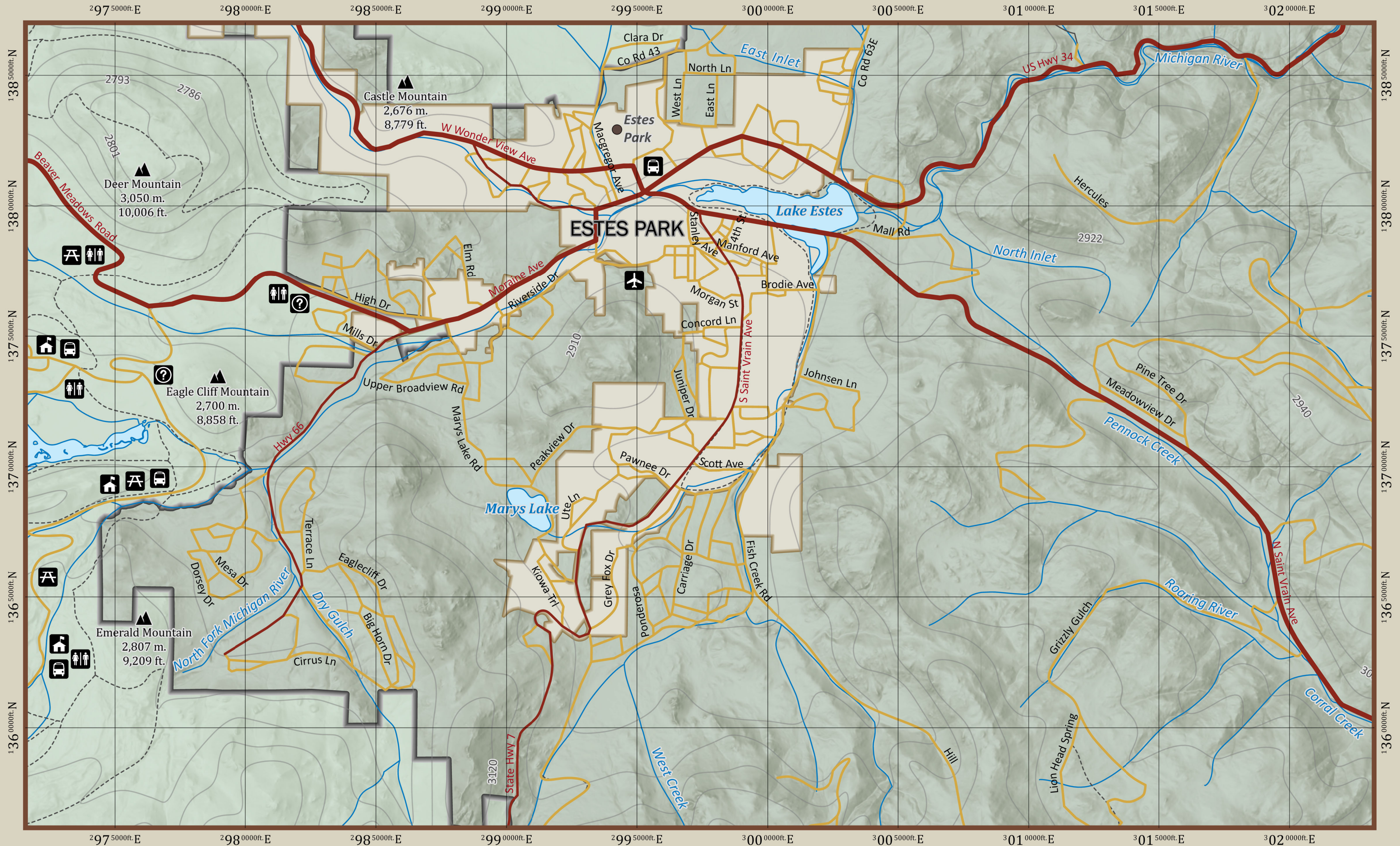
Reference Scale: 1:40,000
NAD 1983 (2011) StatePlane Colorado North FIPS 0501 (US Feet)



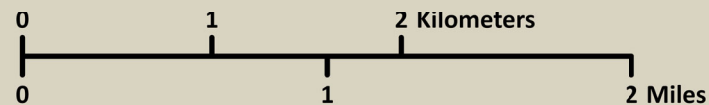
Rocky Mountain National Park



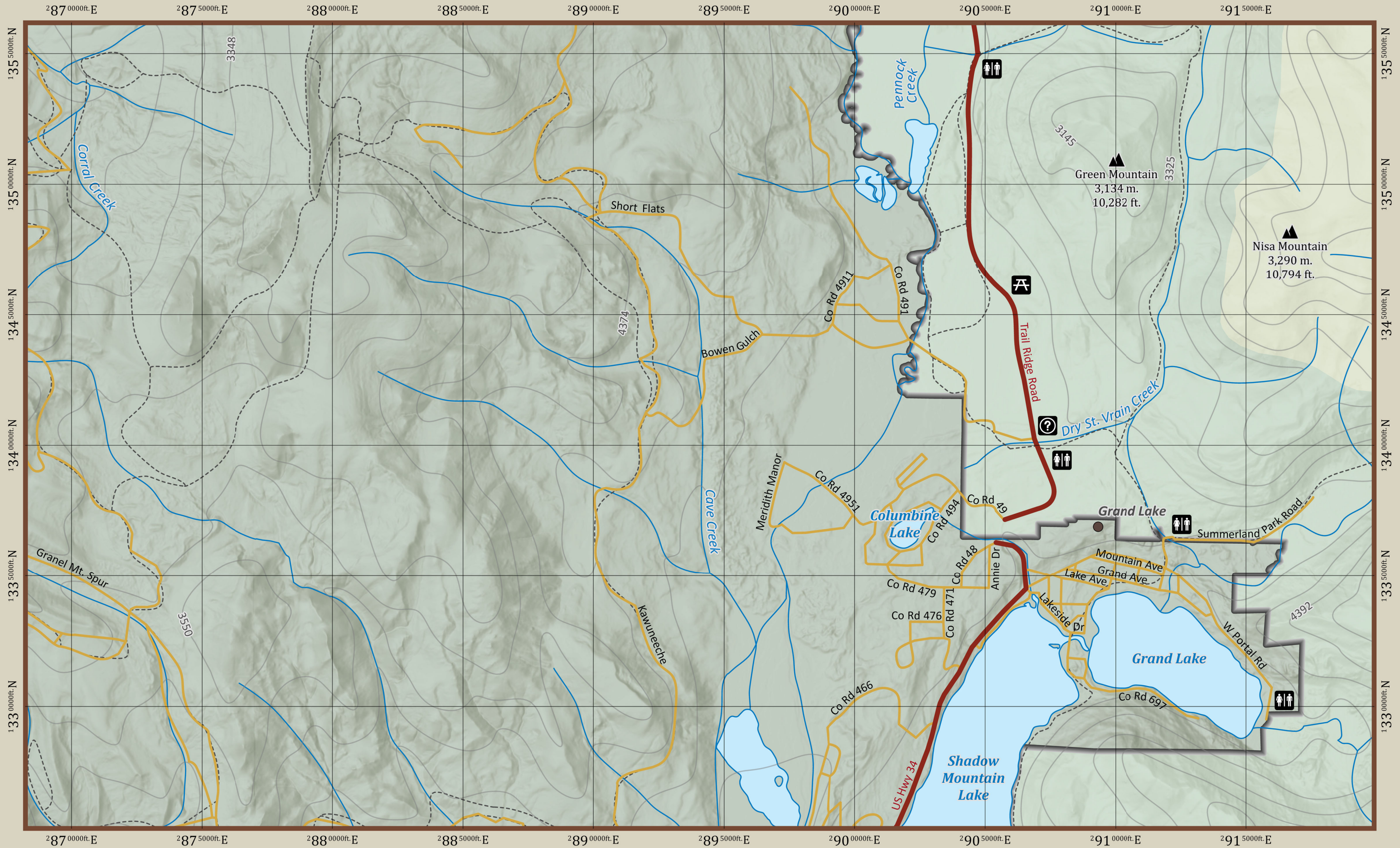
Reference Scale: 1:40,000
NAD 1983 (2011) StatePlane Colorado North FIPS 0501 (US Feet)



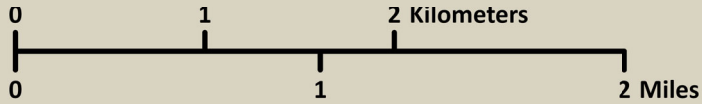
Rocky Mountain National Park



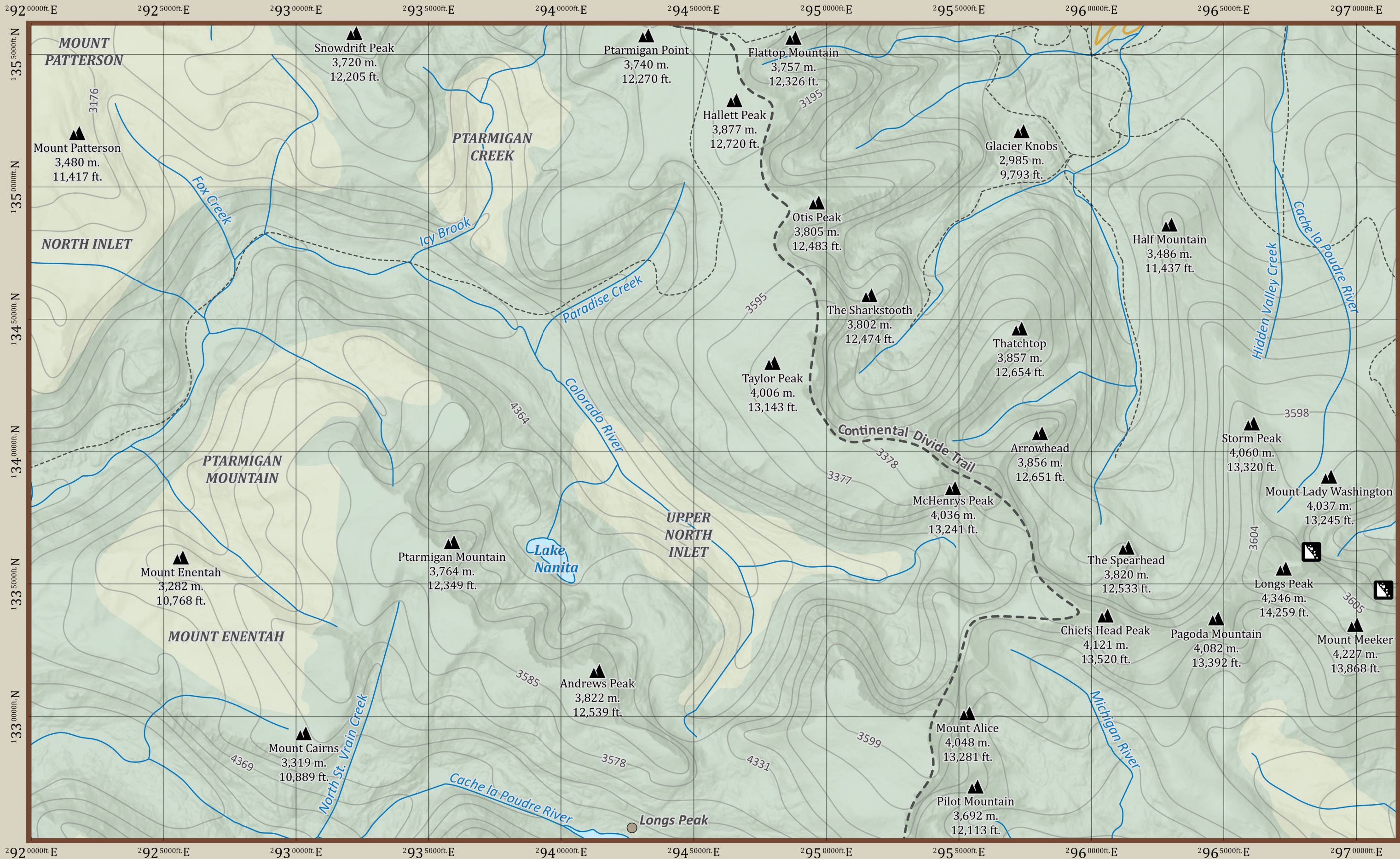
Reference Scale: 1:40,000
NAD 1983 (2011) StatePlane Colorado North FIPS 0501 (US Feet)



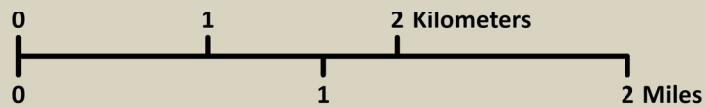
Rocky Mountain National Park



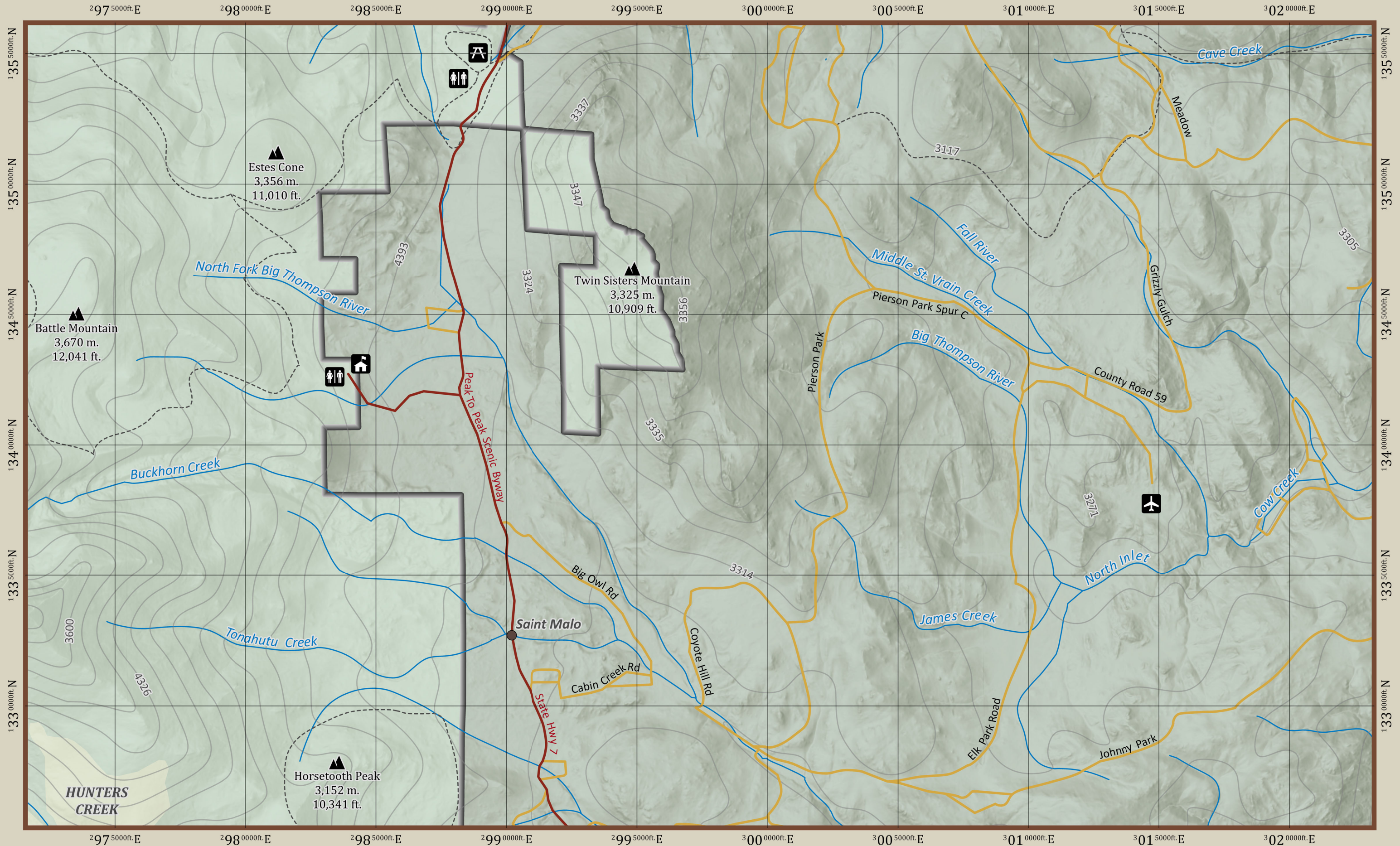
Reference Scale: 1:40,000
NAD 1983 (2011) StatePlane Colorado North FIPS 0501 (US Feet)



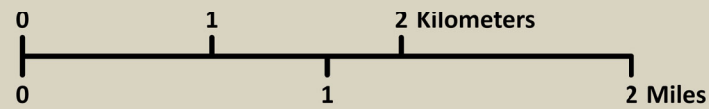
Rocky Mountain National Park



Reference Scale: 1:40,000
NAD 1983 (2011) StatePlane Colorado North FIPS 0501 (US Feet)



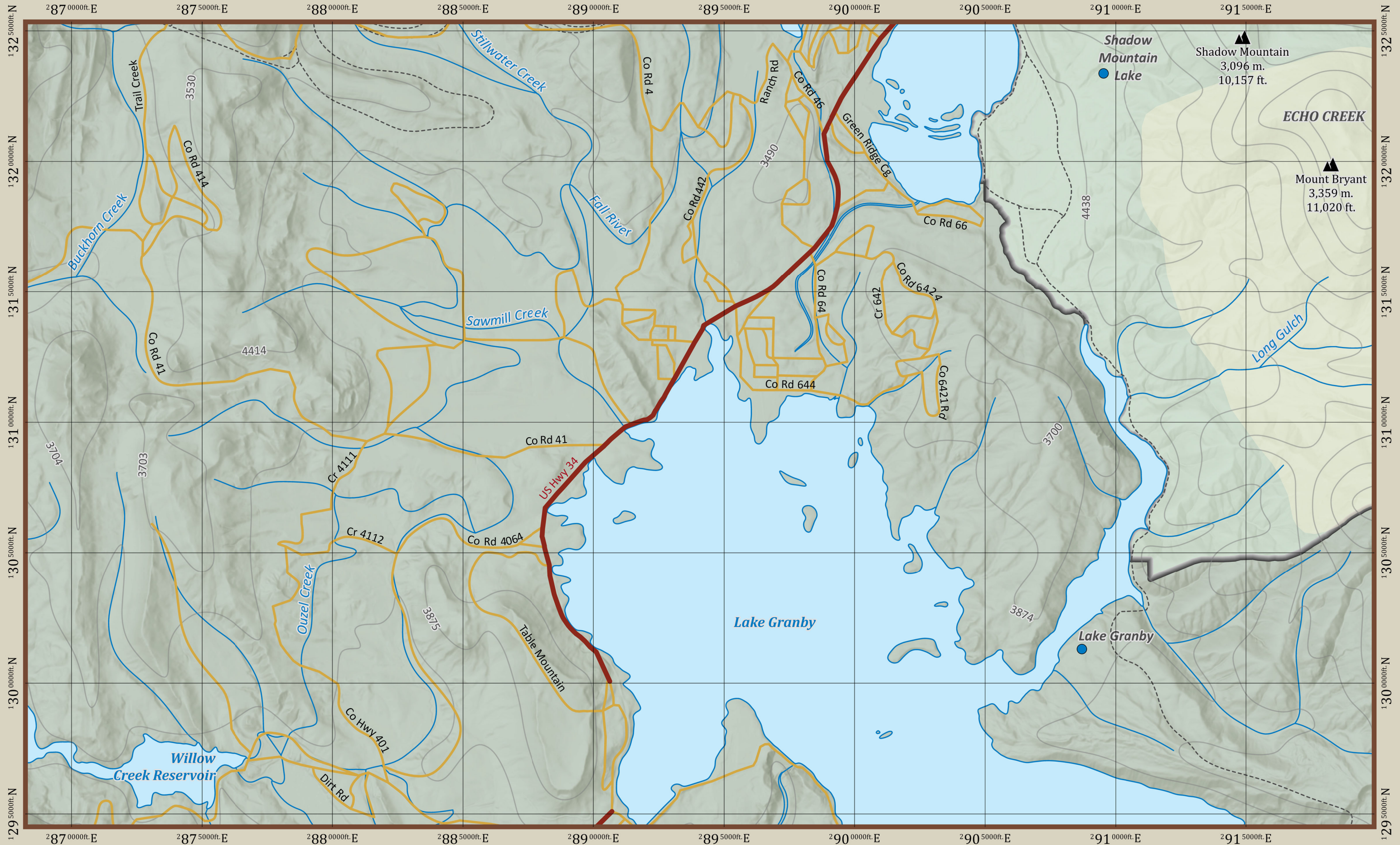
Rocky Mountain National Park



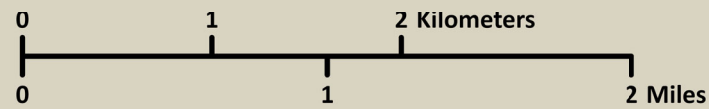
Reference Scale: 1:40,000
NAD 1983 (2011) StatePlane Colorado North FIPS 0501 (US Feet)

D3

Page 12

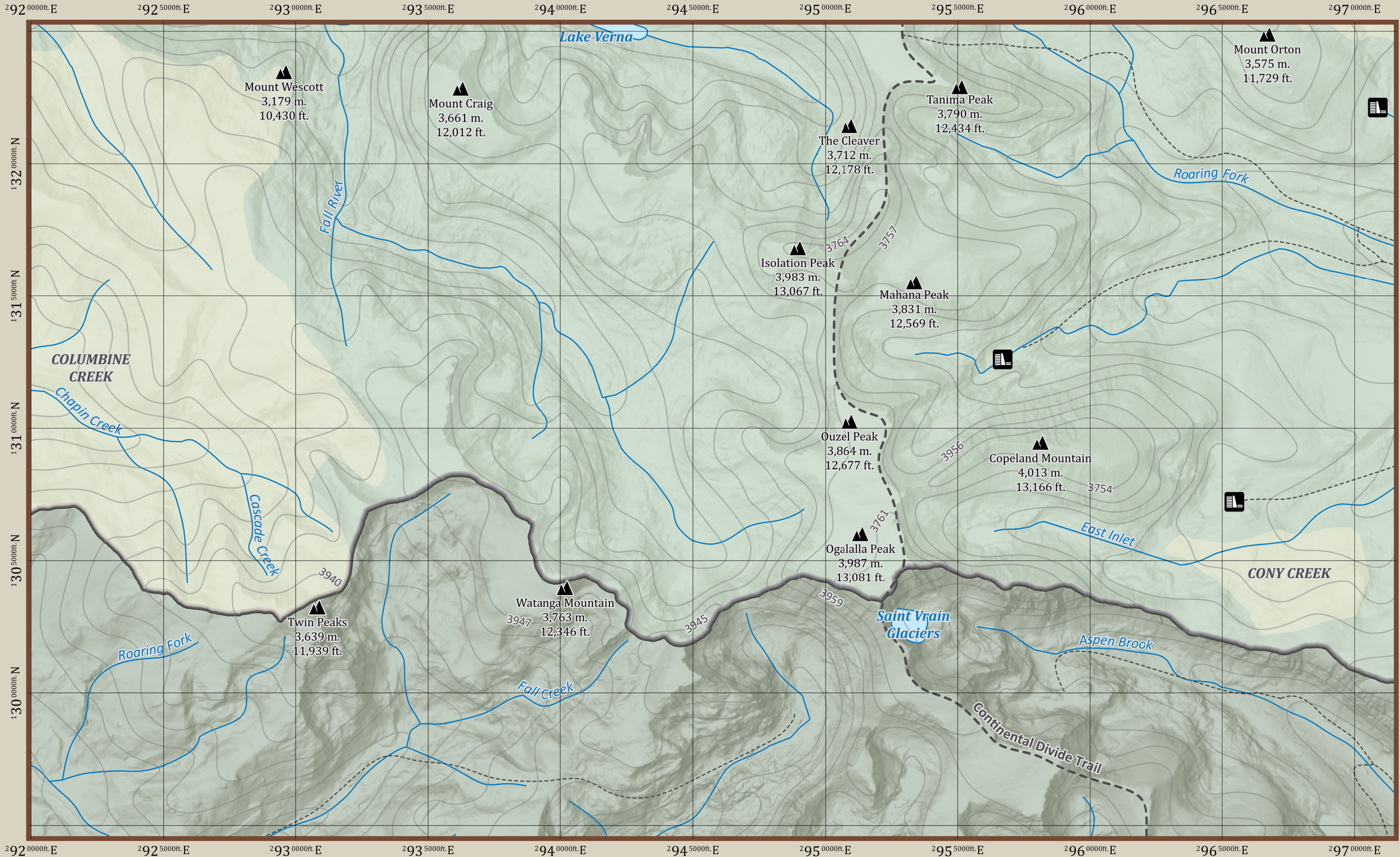


Rocky Mountain National Park

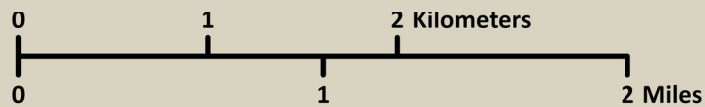


Reference Scale: 1:40,000
NAD 1983 (2011) StatePlane Colorado North FIPS 0501 (US Feet)

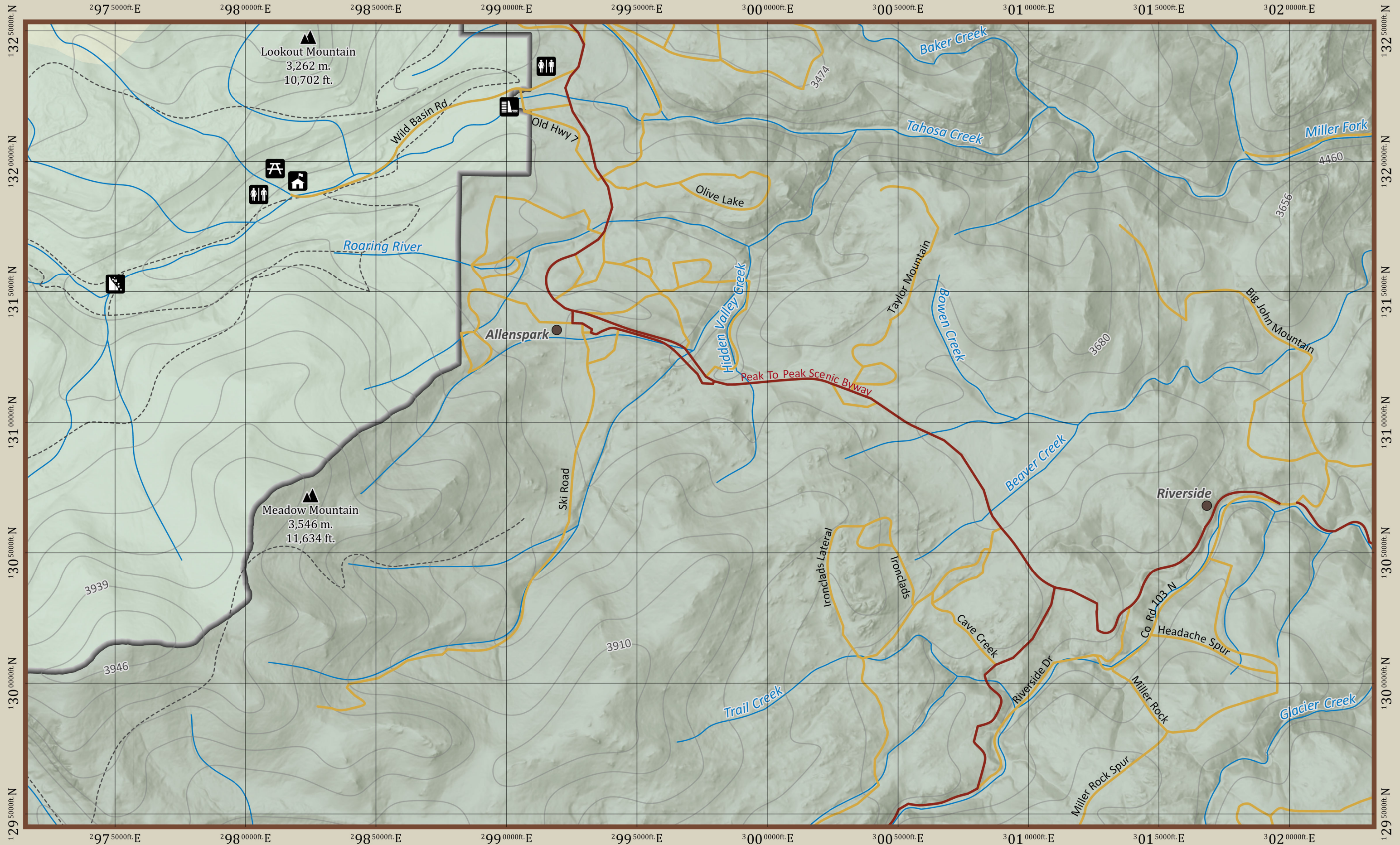
E1



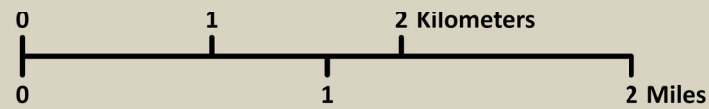
Rocky Mountain National Park



Reference Scale: 1:40,000
NAD 1983 (2011) StatePlane Colorado North FIPS 0501 (US Feet)



Rocky Mountain National Park



Reference Scale: 1:40,000
NAD 1983 (2011) StatePlane Colorado North FIPS 0501 (US Feet)

E3

Credits and Citations

Data:

ArcGIS Hub. (n.d.). Hub.arcgis.com. <https://hub.arcgis.com/>

gisdata. (2020). Arcgis.com. <https://gisdata-estespark.hub.arcgis.com/>

Rocky Mountain National Park. (2017). Arcgis.com. <https://romo-nps.opendata.arcgis.com/search?collection=Dataset>

USGS. (n.d.). TNM Download v2. Apps.nationalmap.gov. <https://apps.nationalmap.gov/downloader/>

Images:

(2015). Loc.gov; Library of Congress. <https://loc.gov/pictures/resource/highsm.33339/>

(2024). Gannett-Cdn.com. <https://tinyurl.com/y464ju2s>

(2024). Skyblueoverland.com. <https://tinyurl.com/mv53jcy6>

National Park Service. (2017). Rocky Mountain National Park (U.S. National Park Service). Nps.gov; National Park Service. <https://www.nps.gov/romo/index.htm>

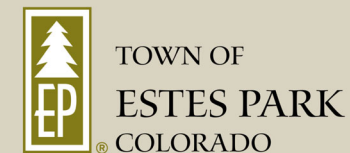
Narrative:

National Park Service. (2017). Rocky Mountain National Park (U.S. National Park Service). Nps.gov; National Park Service. <https://www.nps.gov/romo/index.htm>

Wikipedia Contributors. (2019, September 7). Rocky Mountain National Park. Wikipedia; Wikimedia Foundation. https://en.wikipedia.org/wiki/Rocky_Mountain_National_Park



Bighorn rams taking in the scenery between battles.



This atlas is produced as a portion of the requirements of the GIS: Cartography and Geovisualization program of the Centre of Geographic Sciences, NSCC, Lawrencetown, Nova Scotia. The product is unedited, unverified and intended for educational purposes only.

